



DISCOVERING
THE
WORLD
THROUGH
GIS

GISday

November 16, 2016
gisday.com

GISday

Wednesday, November 16, 2016

[MAIN](#)

[DISCOVER GIS](#)

[REGISTRATION](#)

[RESOURCES](#)

[REGISTER →](#)

Discovering the World Through GIS

GIS Day provides an international forum for users of geographic information systems (GIS) technology to demonstrate real-world applications that are making a difference in our society.

The first formal GIS Day took place in 1999. Esri president and co-founder Jack Dangermond credits Ralph Nader with being the person who inspired the creation of GIS Day. He considered GIS Day a good initiative for people to learn about geography and the uses of GIS. He wanted GIS Day to be a grassroots effort and open to everyone to participate.



GIS Day is One Fun Day to

- Celebrate GIS with everyone
- Discover and explore the benefits of GIS
- Showcase the uses of GIS
- Build and nurture your GIS community



Future Dates

- Wednesday, November 15, 2017
- Wednesday, November 21, 2018
- Wednesday, November 20, 2019

GIS Day - Discover the World Through GIS

GIS Day provides an international forum for users of geographic information systems (GIS) technology to demonstrate real-world applications that are making a difference in our society.

GISday

Wednesday, November 16, 2016

GIS Day is a fun day to:

- Celebrate GIS with everyone
- Discover and explore the benefits of GIS
- Showcase the uses of GIS
- Build and nurture your GIS community

The first formal GIS Day took place in 1999. Esri president and co-founder Jack Dangermond credits Ralph Nader with being the person who inspired the creation of GIS Day.

Nader considered GIS Day a good initiative for people to learn about geography, and the uses of GIS, and wanted GIS Day to be a grassroots effort that was open to everyone.



GIS Day - Discover the World Through GIS

More Than An Event...

GIS Day is not just an event, it's a global movement. GIS day brings universities, government agencies, schools, non-profits, and GIS professionals together to build knowledge of GIS in their communities, and create understanding about the world we live in.



GIS Day happens because you have a passion for Geospatial thinking. Through your event a seed is planted that grows GIS understanding in your community, and around the world.

Each of us has the power to inspire and change the world through GIS. Join the movement on GIS Day!

GIS Day Events Around the Globe

Use this map to find a GIS Day event near you. Please, confirm all dates and times with the event host.



GIS Day Events Around the Globe

Use this map to find a GIS Day event near you. Please, confirm all dates and times with the event host.



Register Your Event

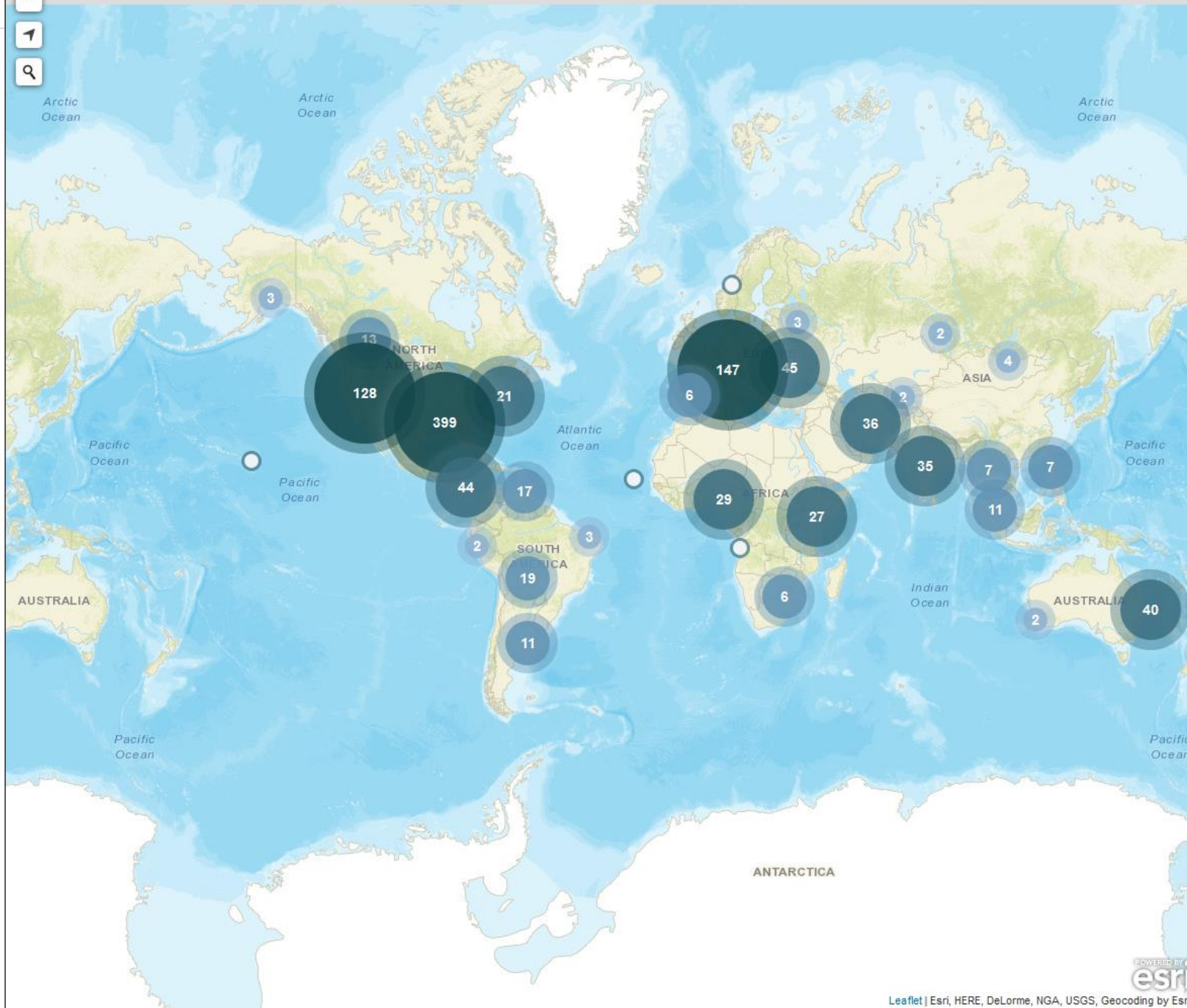
GIS Day is a fun way to celebrate GIS with everyone. It's an opportunity to discover and understand the benefits of GIS and showcase its uses to your community.

GIS Day is a way to build and nurture a GIS community, spreading passion for GIS to users and non-users alike.

[Register your event](#)

Need resources to help you stage your event? No Problem.

To help you put together a fun and successful event, we've collected a few resources to help you



The Living Atlas of the World

The Living Atlas of the World is a great way to introduce your GIS Day audience to the power of maps.

The Living Atlas map featured here is the result of a cooperative effort between Esri and the United States Geological Survey (USGS). It's the highest spatial resolution ecological land units (ELUs) map of the world ever produced.

Click anywhere on the map to learn more about each ecological facet.

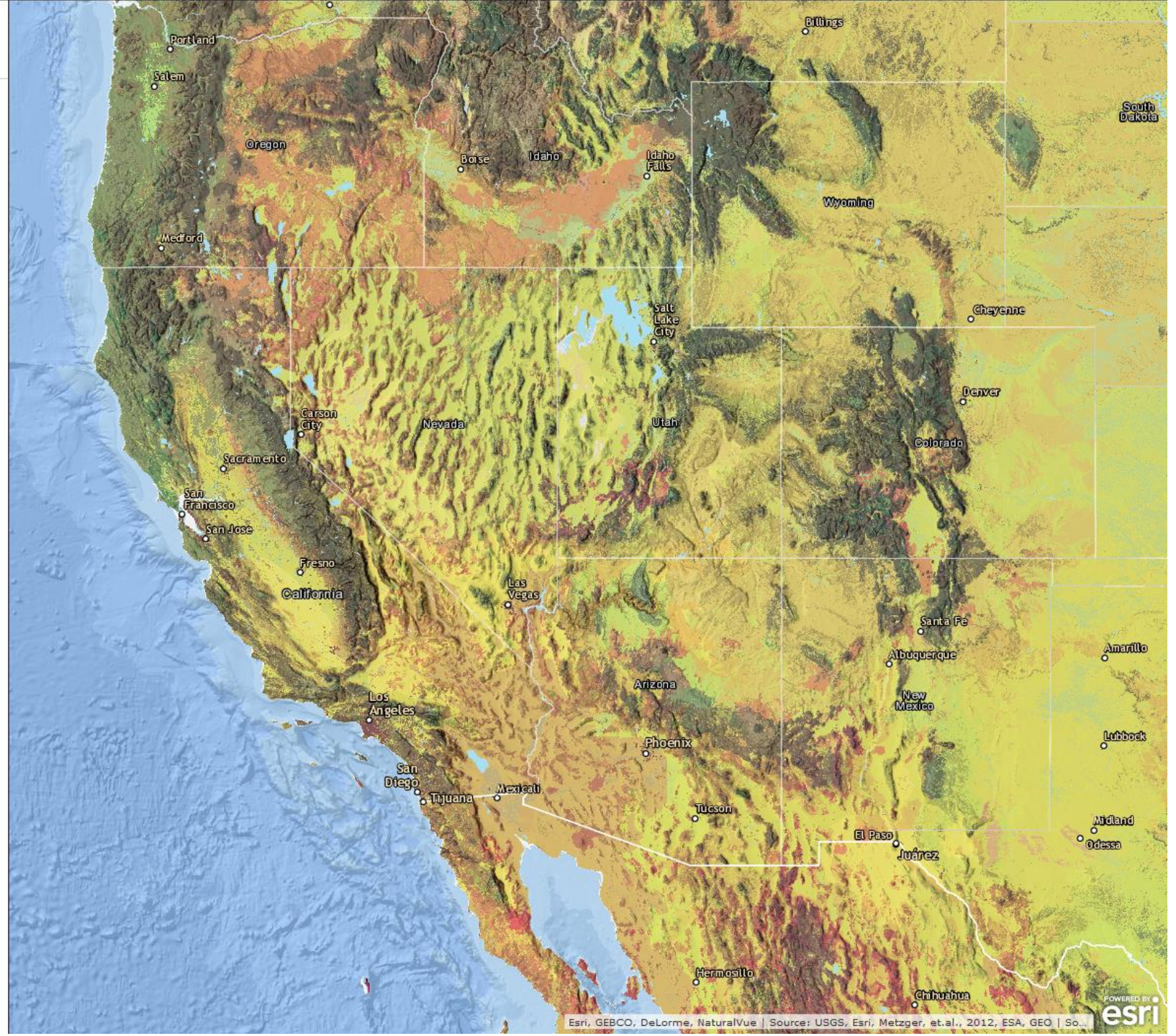
More About the Living Atlas

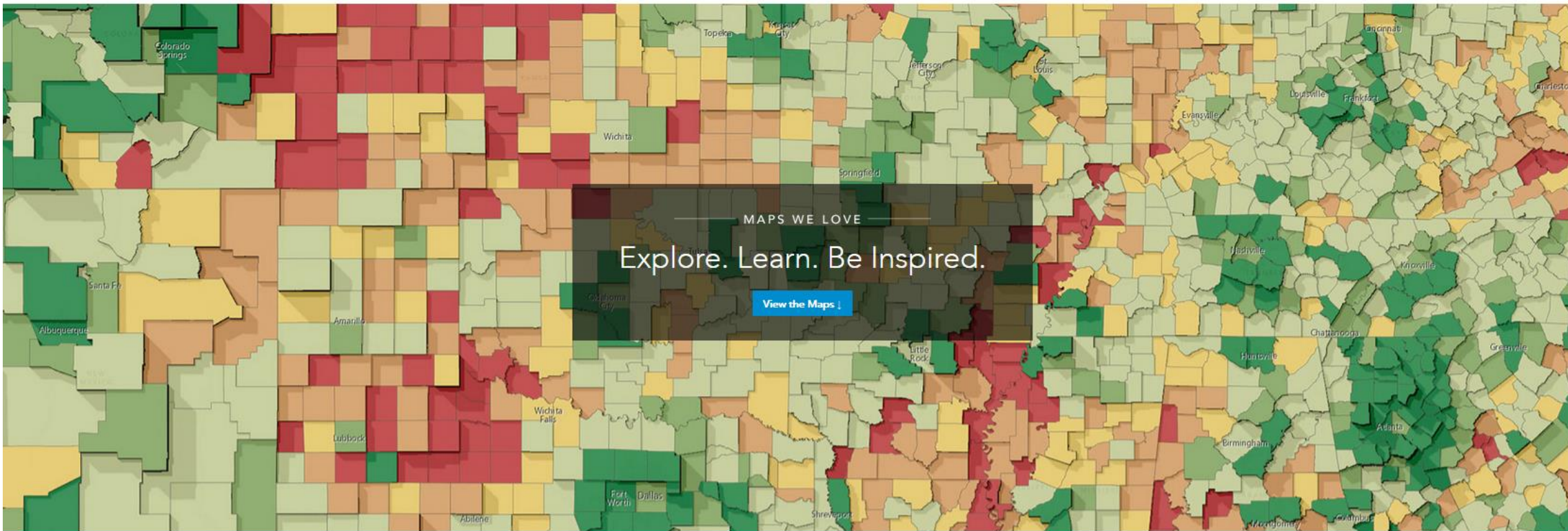
The Living Atlas is the foremost collection of authoritative, ready-to-use global geographic information ever assembled.

The Living Atlas enables the exploration of people and places around the world, as well as the natural and man-made influences that impact them.

Categories include:

- Imagery
- Demographics & Lifestyle
- Landscape
- Earth Observations
- Historical Maps
- And more...





MAPS WE LOVE

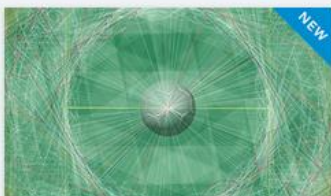
Explore. Learn. Be Inspired.

[View the Maps ↓](#)

A map can change the world. So can you. With the right resources, right here and now, you will be able to create beautiful, powerful maps.

[Read the Blog →](#) [Watch the Video ↻](#)

Find (and Make!) the Maps You Love

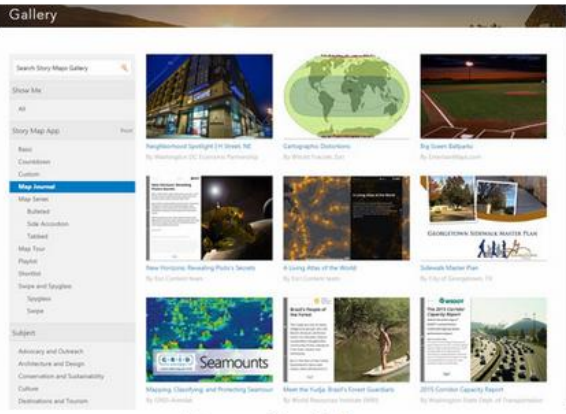


Story Maps

There is no better way to tell a GIS Day story than using a Story Map.

The Story Map featured here allows us to explore a historic map of Washington, D.C. Grab the lens and move it to view current satellite imagery beneath the historic map.

Choose from a variety of different Story Map templates to tell your own story, and browse the gallery to view examples from the Story Map community.

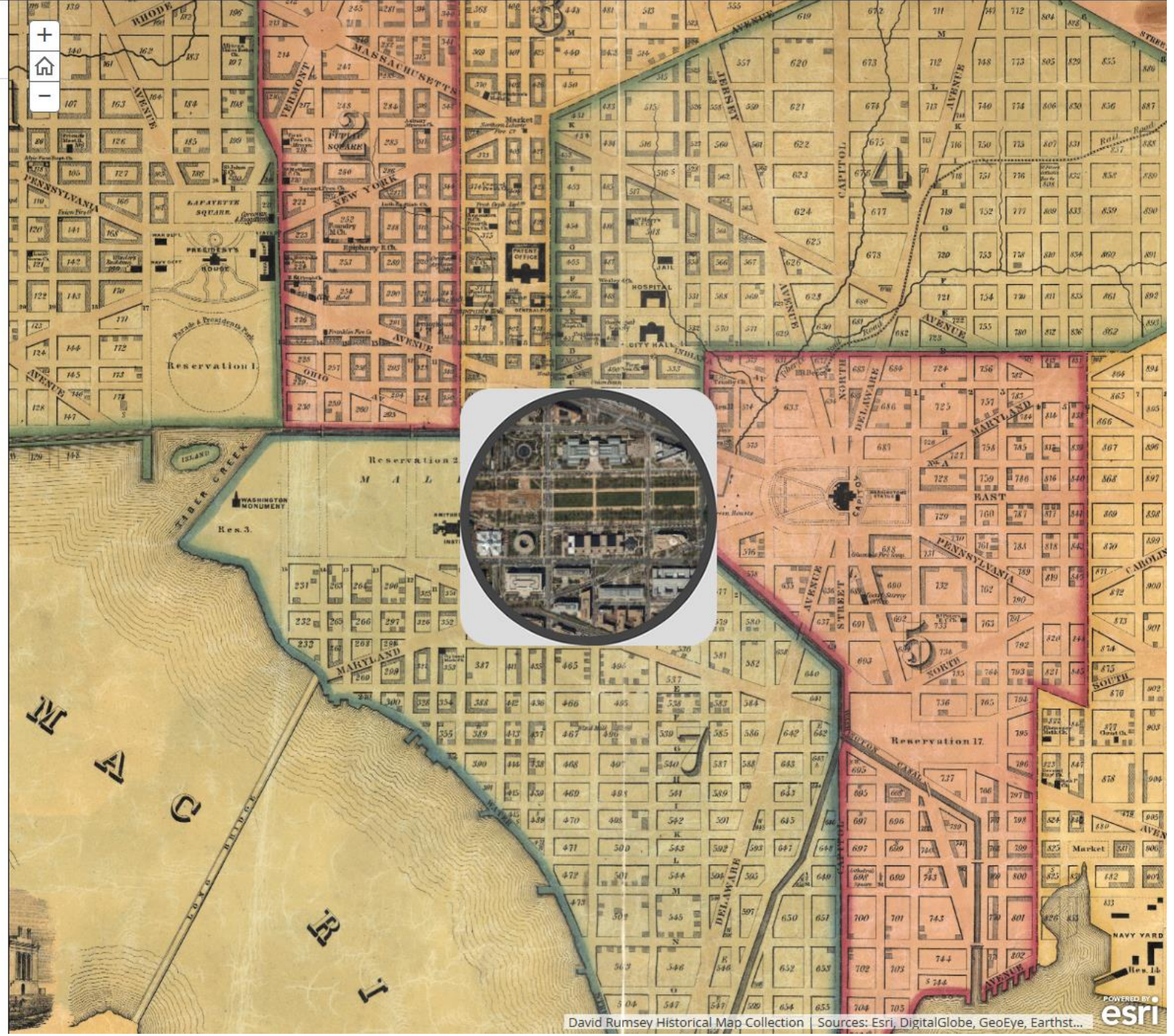


[Browse the Gallery](#)

Esri Story Maps let you combine authoritative maps with narrative text, images, and multimedia content. They make it easy to harness the power of maps and geography to tell your story.

Engage and Inspire

Share a place you love. Make your case. Showcase your organization's plans and projects. Everyone has a story. What's yours?





This leading engineering and surveying firm estimates 60% cost savings using Drone2Map over conventional survey techniques. [Why?](#)

Turn Your Drone Into an Enterprise GIS Productivity Tool

Create orthomosaics, 3D meshes, and more, in ArcGIS from your drone-captured still imagery — in minutes, not days.





ArcGIS Earth

Maps for Everyone on Earth

[Download for Free ↓](#)

Explore any part of the world with ArcGIS Earth. Work with a variety of 3D and 2D map data formats ... including KML.

Display data, sketch placemarks, measure distances and areas, and add annotations. ArcGIS Earth has everything you need to easily understand spatial information so you get the full picture.

GIS day

